

wifinity

Great connectivity is
coming to the later
living sector

Don't get left behind



Contents

- #1 [A new opportunity for later living](#)
- #2 [Benefits of managed connectivity](#)
- #3 [Why Anchor Chooses Wifinity](#)
- #4 [Working with us](#)
- #5 [Start the conversation](#)



A new
opportunity for
later living



Research has shown that great WiFi is an important factor in choosing where to retire for nearly two thirds of people¹.

Speedy, secure and hassle-free connectivity is a must-have for residents of integrated retirement communities and retirement community residents.

Whether arranging the next Click & Collect. Bingeing on Netflix. Continuing to run their small business. Or just keeping in touch with friends and family.

Great connectivity is also essential in supporting digital inclusivity. It's helping those less familiar with digital services to feel more connected and confident so that they can fully participate in our increasingly digital world.

Strong connectivity isn't just a benefit to the residents – it's the backbone for the staff. With improved communications and centrally controlled systems, information can flow freely, systems can hum efficiently and worries about logistics can fade away.

Retirement community providers are now seeing that it's

possible to stand out, attract residents and keep their staff happy, all by providing excellent connectivity.

But is it really that easy?

Often individual locations or residents organise their own connectivity with multiple suppliers who are competing against each other.

Patchy connectivity. Leaky security. Endless visits from engineers.

Ultimately, it's highly disruptive and potentially expensive.

But there's a new option that ticks all the boxes for operators and residents, providing great connectivity that's speedy, reliable, secure and attractive.

And because it all comes from one supplier, it reduces complexity and headaches.



[1] <https://www.express.co.uk/life-style/property/945734/retirement-villages-wifi-pensioners-sheltered-housing-technology>

Benefits of managed connectivity



Excellent for residents



Centralised management efficiency

Consistent, site-wide WiFi with no hot-spots, in every room.



Effortless setup

No waiting for engineers - WiFi is ready upon move-in and easy to setup.



Smart home ready

Easily access Alexa, smart lighting, and other technologies.



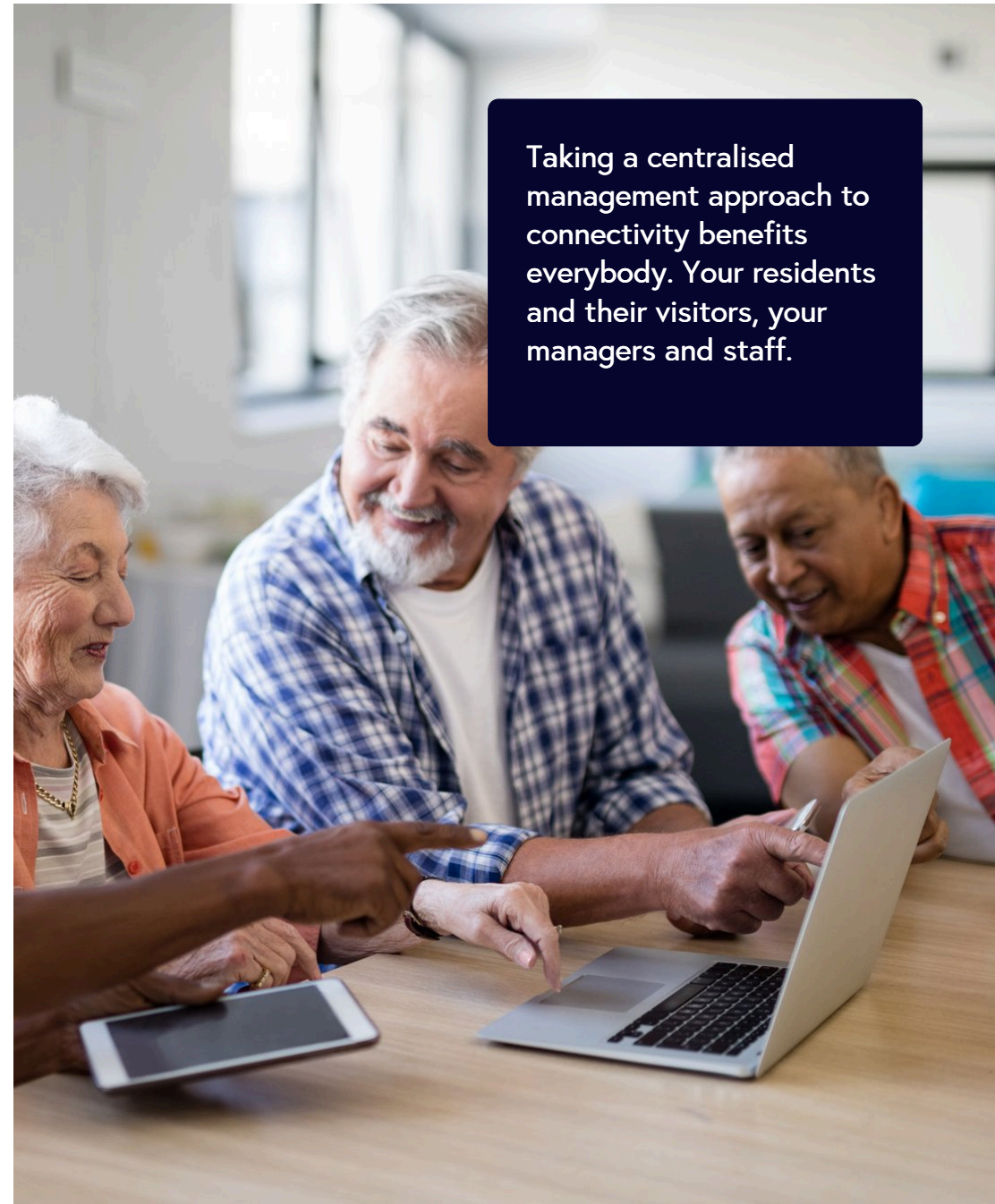
Confidence through security

Stay secure and connected with a trusted network while using apps and embracing a digital lifestyle.



Social connection and digital inclusivity

Support ARCO's mission by ensuring everyone feels connected and included in the digital world.



Taking a centralised management approach to connectivity benefits everybody. Your residents and their visitors, your managers and staff.

Excellent for staff



Centrally managed efficiency

Consistent user experience across devices, all on one network.



Empowered staff

Easy access to essential systems and apps, making working that little bit smoother.



Dedicated support

24/7 management by Wifnity to take away any headaches and downtime frustration.



Rock-solid security

Enterprise-grade security and 24/7 monitoring for peace of mind.

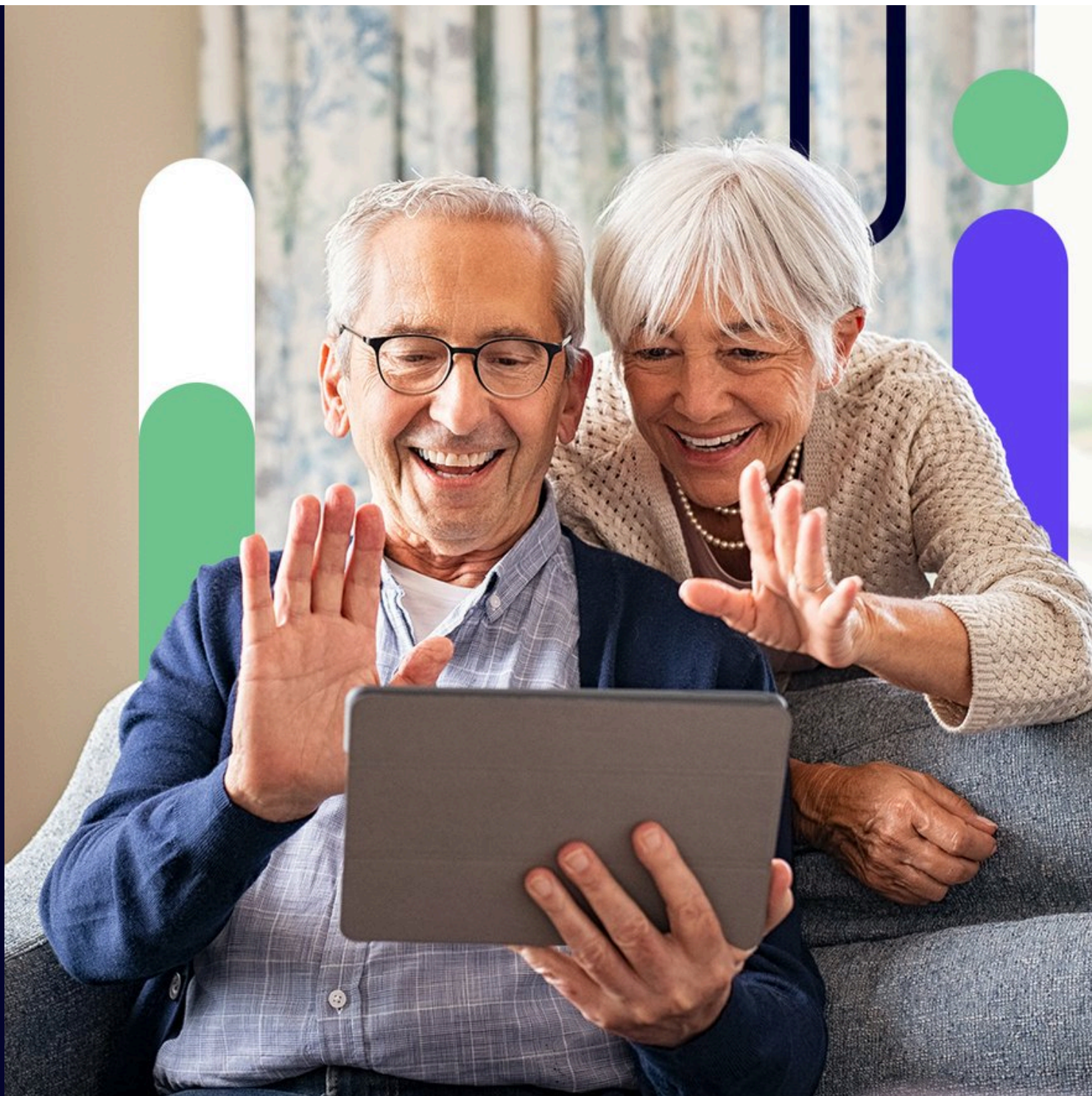


Future-proof infrastructure

Ready for site-wide smart technologies like CCTV and intercom systems.



Why Anchor Chooses Wifinity





We're proud to have been awarded a 10-year contract with Anchor Hanover Group to install and manage connectivity and related internet services across all 1,700 sites within Anchor's portfolio.

Anchor is England's largest supplier of specialist housing and care for people in later life.

The not-for-profit company serves more than 65,000 residents, across residential properties, care homes and retirement communities.

Recognising the importance of

connectivity to later living, Anchor has chosen to invest in its digital infrastructure as part of its "Connected Properties" programme.

The contract with Wifinity is a first for the later living sector. One of the reasons we were selected was our scalability and ability to work at speed.

We'll be providing connectivity to one of Anchor's sites approximately every six working hours for the foreseeable future.

Sarah Jones, CEO Of Anchor Hanover Group, comments "We chose to partner with Wifinity because they are the leaders in the space of providing complex, managed internet and broadband services.

It has a proven track record of delivering at scale and they also took the time to really understand

the people we serve and our business' specific needs."

Costas Demetriou, Wifinity CEO, says "We are delighted to be selected by Anchor to be a part of this digital transformation. The scale and ambition of this programme is huge and will make such a difference to so many people."

Working
with us



From connecting soldiers to thriving in communities

We started to help soldiers to stay connected across the UK in 2007. Proudly backed by British investment, we earned the trust of the Ministry of Defence, building and managing reliable WiFi for 150 military camps.

Today, that experience keeping troops online each month fuels our mission: bridging the digital divide across sectors.

From holiday camps and student dorms to vibrant later living communities, we're Europe's fastest-growing WiFi provider, powering connections that matter.

And in the later living sector, we're proud affiliate members of ARCO, working hand-in-hand to create connected communities where technology empowers lives.

We're the experts

Our people have all the expertise and knowledge you'd expect from a leader in the space.

But more than that we strongly believe in forging partnerships with our clients that are founded on transparency and flexibility.

We ditch the one-size-fits-all approach. From single care homes to sprawling retirement communities, our tailored solutions are crafted with flexibility and transparency in mind.

This tailored approach isn't just talk. It's backed by a 4.7-star Trust Pilot rating and an industry-high average customer relationship of seven years. We don't just connect your WiFi, we connect with you.



We make things simple

By providing a complete end-to-end service for your business and your residents, we reduce the complexity that comes with multiple providers.

Design and build. Installation. 24/7 network support and help desk. Fixing issues. Everything fully managed by our friendly UK-based team.

And we can scale to your needs, for example as you grow or choose to invest in new smart technologies.

We can work together to bring better connectivity to people in later life.

Bring greater
connectivity to your
properties today

www.wifinity.co.uk

